



# Richard's Court

Maryland, Lagos



# Intro

Richard's Court was born in a Stanford University SEED classroom out of a passion to make luxury housing affordable to middle class families.

Richard's Court is a mid-market residential development currently under rapid construction and is centrally located in Maryland, Lagos. Phase I which comprises of 22 units have been sold out. We are now onto phase II of this prime development.

Richard's Court is a masterpiece and you have it all to enjoy in full value with our facilities.



*Richard Olatunde Fadiora  
CEO, Richard's Court Limited*



## Overview

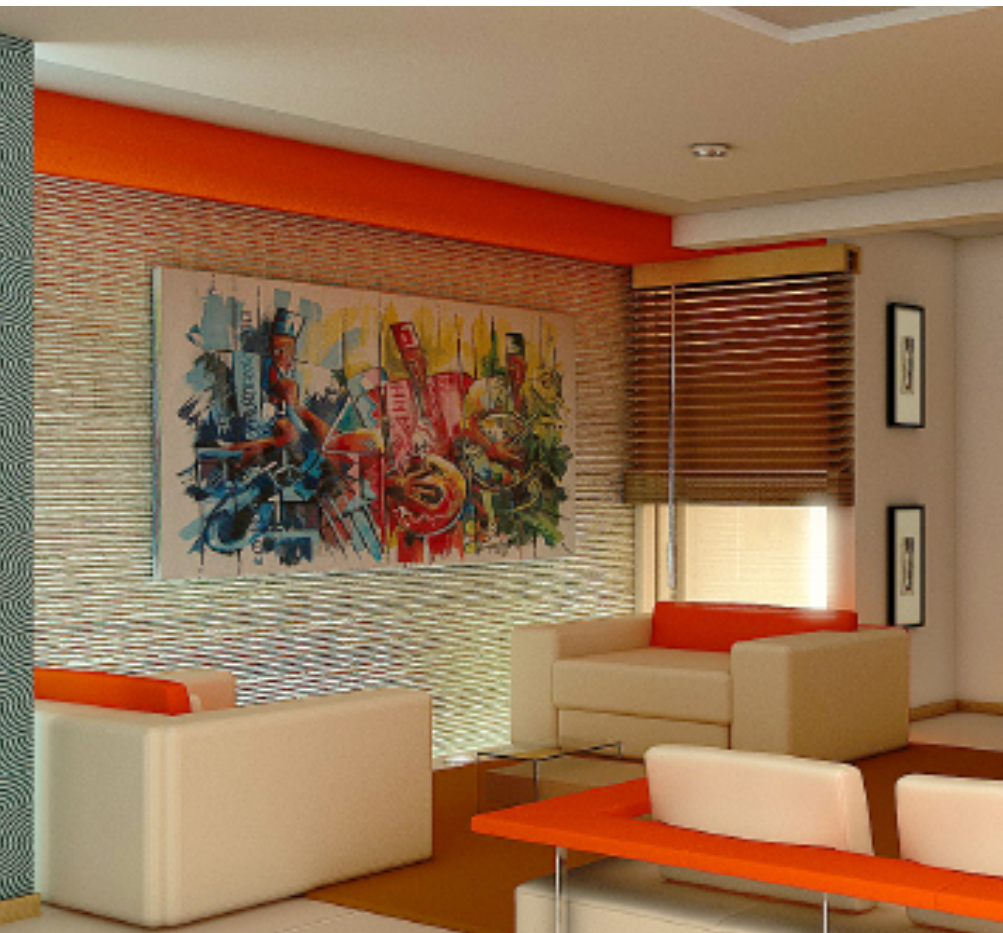
Richards Court is a fantastic and competitive piece of modern building located in Maryland, one of the most developed areas in Lagos. It is a gated and fully-serviced residential estate with all the features and amenities for your utmost comfort.

It comes in two designs: the Twins, which are five bedroom semi-detached duplexes and the Terraces which are four bedroom apartments. All rooms are ensuite.

Both designs come with quality and standard furnishing materials and fully-equipped kitchen and classic dining rooms. Richards Court is a perfect modern showcase of civil engineering integration, a design made for comfort, elegance and style.

A valid and legal C of O title will be given to all buyers.





## Elegance

If your taste is high in terms of quality or your fear is the project timeline, you have nothing to fear. We have pushed the limits across many boundaries both locally and internationally. You can trust us with your housing projects.



**B**oth the Twins and the Terraces comes with modern furnishing materials of quality attraction and high standards.

Richard's Court is a perfect modern showcase of civil engineering integration, a design made for comfort, elegance and style.



# Your Dream Come Alive

Built to modern taste and located in Maryland, one of the most developed areas in Lagos, Richards Court is a prime investment opportunity for the discerning investors.

## The Twins





# Deliverability



We have an history and reputation for successful completion of projects. The Twins concept is a dream that is coming true. It's time to make your family happy.



## Customization

All rooms in each design at Richard's Court comes with high quality air condition systems, modern bath and toilets fixtures and well-furnished wardrobes.

Each unit has a dawrf wall and a gate ensuring your privacy and enough space to park three cars.

The master bedrooms are elegantly equipped with stylish walk-in closet for your dressing needs.

While we take time to give your housing the quality that you deserve, we welcome slight modifications at finishing processes to suit your specific requirements.







## The Interiors



Each room at Richard's Court is en-suite. The finishing and furnishing materials are of high quality and international standards.

All units come with modern well-equipped kitchen and classic dining rooms.



# More Luxury





# LUXURY LIVING FOR YOU

Richard's Court was born in a Stanford University SEED classroom out of a passion to make luxury housing affordable to middle class families. The Twins are semi detached duplexes in Richard's Court, Maryland. Each room in the buildings are en-suite with facilities.

The Richard's Court is a fantastic concept of modern civil engineering building design centrally located in Maryland, Lagos, Nigeria.

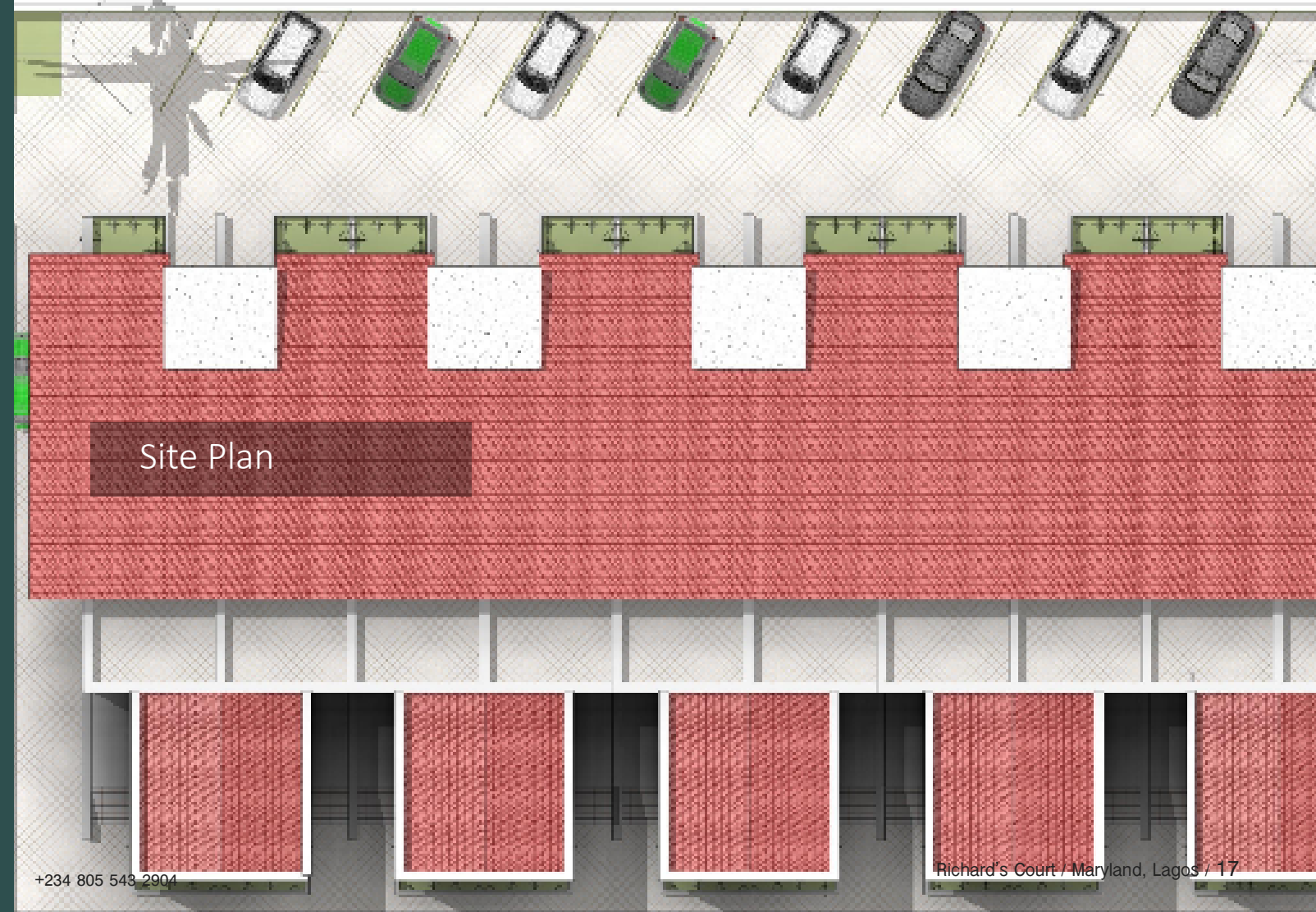
The location has short route to major places in Lagos State including Ikeja, Yaba, 3rd Mainland, Local and International Airport with a driving time range of five (5) to twenty (20) minutes. There are Two major designs in the estate:

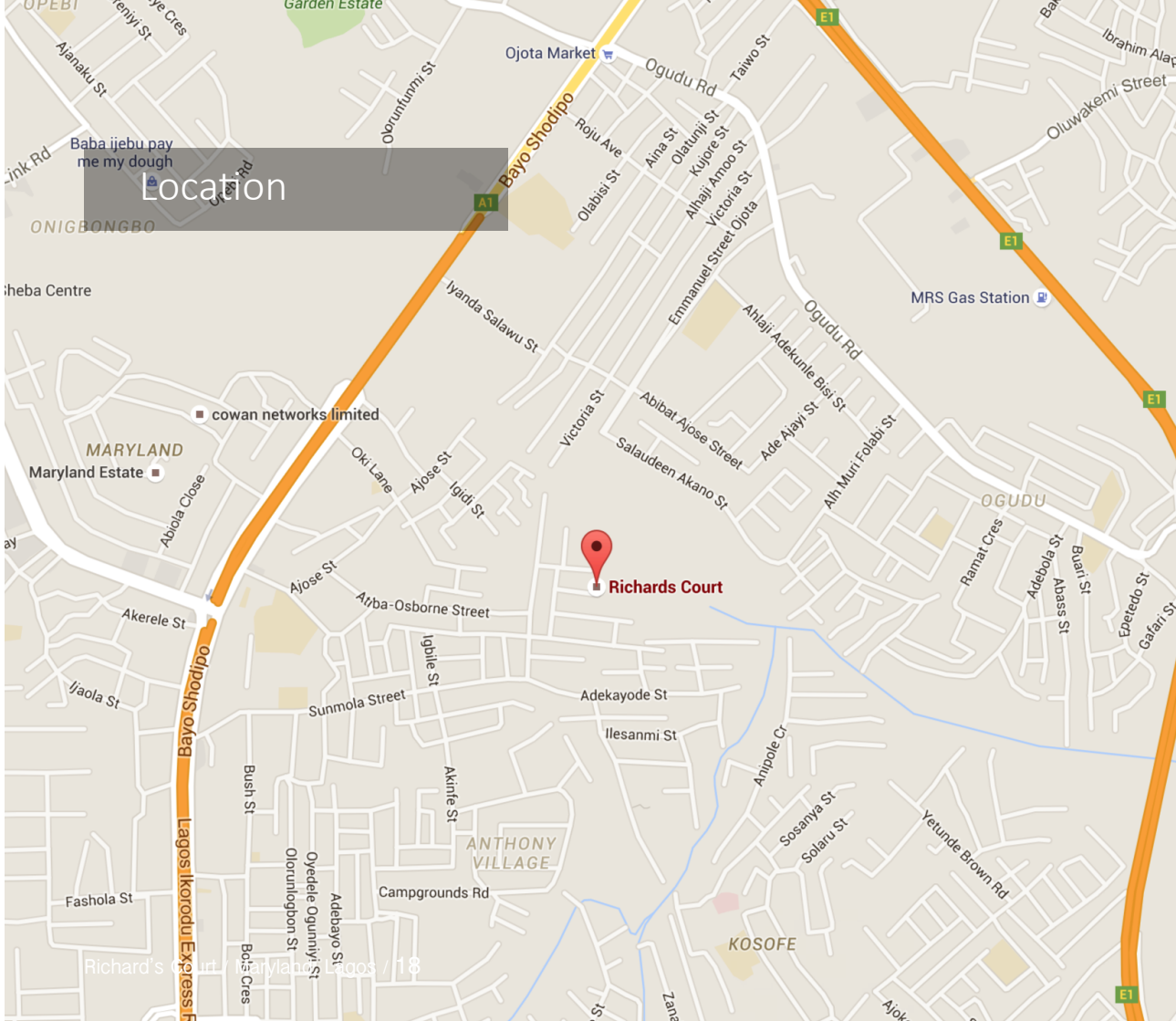
The Twins (5 Bedrooms Semi - Detached Duplex) and

The Terraces (4 Bedrooms Housing).

Richard's Court, under rapid construction, will integrate a combination of solar powered systems, inverter system, estate generator supply and PHCN channel supply. Your family have a fantastic and modern facilities to enjoy at Richard's Court.

The Twins and The Terrace will come with all rooms en-suite, all rooms air conditioned, modern and equipped kitchen and classic dining rooms.



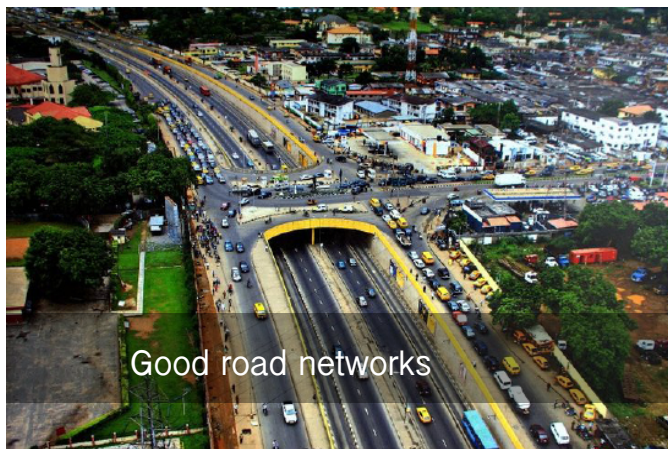


## Accessibility

The property is located in a newly developed area, off Sunmola street, Mende, Maryland. It offers a very quick access to all the key spots in Ikeja, the administrative capital of Lagos, and its environs. Below are the driving times to key areas from Richard's Court:

- 3 minutes drive from Suya Spot, Maryland
- 5 minutes drive from Mobil filling station, Maryland
- 5 minutes drive to Anthony Village
- 7 minutes drive to Gbagada-end of Third Mainland Bridge
- 10 minutes drive to Ikeja
- 20 minutes drive to Lagos Local/International Airport
- 20 minutes drive to Yaba





Good road networks

## Nearby Features

Maryland is a well-developed residential area with peaceful and serene environment perfect for both newly weds or family with kids; it is one of the ideal places to starting or growing a family.

With great schools, modern amenities and easy accessibility to many great spots and landmarks, you are assured of a comfortable living in an environment that offers you and your family a home you can truly call yours.

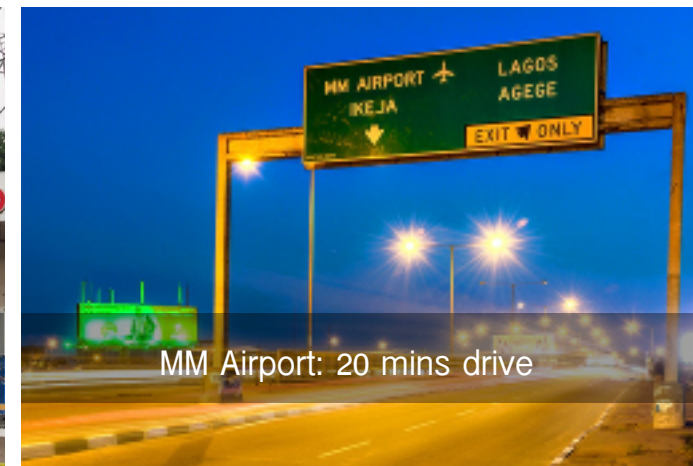
Properties in Maryland have a reputation for their great return on investments.



Over 50 schools in Maryland



Mobile Filling Station & Mr Biggs



MM Airport: 20 mins drive



Maryland Shopping Mall, 5 mins drive



# Affordable Luxury

Richard's Court is a deliberate effort to create a communal lifestyle without compromising your privacy in a central location. In an attempt to deliver our promises, we integrate an active engineering procedures without leaving any stone unturned.

What we do is to provide affordable luxury to the middle class. The estate comes with its own power transformer and diesel generator to cater for the whole units. And there is inverters for each unit in the estate.

And you can customized your own unit(s) if you make this known to us on time. We respect our clients and it is our culture to handle their respective design requirements with utmost regard. We deliver within allocated project timeline while meeting your taste in terms of quality and aesthetics.

We have an history! You can trust us with your housing projects. Its time to make your family happy!



## Features & Amenities

### Swimming Pool

Richard's Court comes with a central, standard swimming pool. Enjoy your weekend having the most pleasant dive or take your kids in swimming lessons. All these within a secure environs giving you peace of mind.



# Features & Amenities

## 24/7 Electricity

Apart from supplies from PHCN, Richard's Court provides back-up electricity from diesel generators and inverters to ensure your home and our communication/lighting systems are always powered on.



## Water Facility

You don't have to dig your own borehole. There is industrial borehole that can serve the entire estate, thereby saving you the costs and headache associated with running your own water facility.

## Central Sewage System

We abstract away and handle all the unpleasant stuffs so that you can focus on what your truly love: your family and your work. Handling sewage stuffs is not your take, we know!

## External Lighting

Being an estate, we have made provision for proper lighting of the whole surroundings including the roads, car parks, fences and the gating area.



# Features & Amenities

## Manned Security

Richard's Court will be manned 24/7 by professional security team at the gates and within the estate to ensure maximum compliance to safety rules.



## Green Areas

There will be grassy areas with trees planted to beautify the surroundings as well as to provide clean air to the occupants. They also serve as outdoor relaxation spots for the whole family.



# Who We Are

Richard Brainsworth Limited, the parent company of Richard's Court, started as building contractors since 2004 and have many quality buildings and clients in our history. We pride ourselves in exceeding customer's expectations in building modern structures continually making landmark in real estate.

We have since moved a notch higher with our flagship of luxury homes for sales. We are pushing the limits in the Nigerian real estate industry.

We offer you an experience of luxury, a serene environment, quality finishing and above all the pricing is unbelievably affordable.



Richard's Court is a wonderful investment opportunity that offers premium value, location, functionality and comfort. It's location in Maryland, one of the most accessible and matured areas of Lagos, makes it perfect for any type of residential dwelling.



# Get In Touch

Richard's Court Limited

tel: +234 805-329-8307, +234 805 543 2904

email: [info@richardscourt.com](mailto:info@richardscourt.com)

web: [www.richardscourt.com](http://www.richardscourt.com)

Head Office:

20B Adediran Ajao Crescent,  
Ajao Estate, Anthony Village,  
Lagos, Nigeria